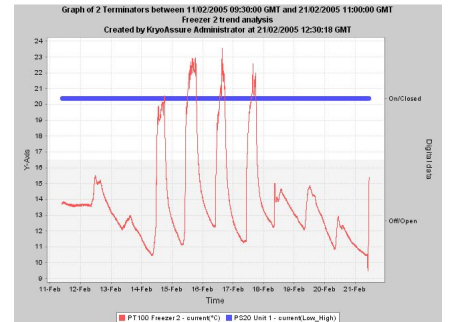
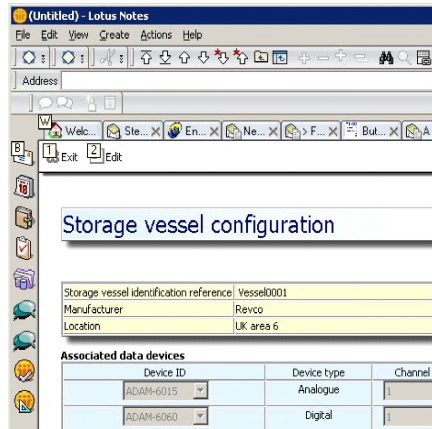


## Assure24seven web-based monitoring Kryo-Admin - boxed solutions for condition monitoring

- Browser access
- Integrates sample condition and location history
- 1,000 measurement points
- Email & mobile notifications
- Custom graphical reports
- CFR 21 Part 11 compliance



### Assure24seven

The Assure24seven suite of products, from Planer, offers users a versatile mix of features and optional capabilities to suit all customer requirements and budgets.

Products are 'web-based' which means that information can be accessed from anywhere in the world, by means of 'web-browsers', so no software is required at the point of access.

A very wide range of input parameters such as temperature, level, humidity etc. can be monitored around the clock. Deviations can instigate public alarms or can be set to send notifications to named individuals by email or mobile phone.

Over 1,000 measurement points can be accommodated and the system can start small and be added to, by the user, at any time, without the need of specialists.

A wide variety of standard reports is available, incorporating both tabular and graphical data, and custom reports are easily created, again, by the user, without need of specialist help.

Data is locked away forever in a secure tamper-proof store and 'digitally-signed documents' and secure, password protected, log-ins ensure that systems comfortably meet the requirements of CFR 21 Part 11 security regulations.

### Kryo-Admin

Constant monitoring of over 1,000 measurements from a very wide variety of sources, with speedy email and mobile phone notifications which provide full alarm details. Conditions can be investigated, and acknowledged by browser, from home or elsewhere.

User defined graphical reports provide an easy visualisation of data, trends and events. Scheduled email reports allow users to see summaries of the data they want, how and when they want it.

'Reassurance messages' can provide a regular 'all-is-well' message to ensure peace of mind for critical storage systems and 'Alarm escalation' ensures that situations not rectified in a timely manner, or which become more severe, move up the management hierarchy until suitably dealt with.

Kryo-Admin is an IBM Lotus Domino server application which runs in the background without needing attention - replicas of user data can automatically and routinely be saved on other PC's.

Document modifications are retained automatically, providing an audit-trail of user modifications to the system, and scheduled data archiving keeps the database small and fast.

### Kryo-Admin features

- Integrates with KryoTrak Inventory Control System to give complete traceable history of sample condition AND location.
- Web-based for global access.
- Browser-based access - investigate and acknowledge alarms from remote locations without software.
- Over 1,000 measurement points from sources including,
  - Temperature
  - Level
  - Pressure
  - Humidity
  - Oxygen level
  - Carbon dioxide level
  - pH
  - Doors and lids etc.
- Email and mobile alarm notification.
- Graphical reports for visualisation of data, trends and events.
- Alarm escalation to higher user levels if not corrected in time, or if condition deteriorates.
- High security and reliability - IBM hardware and software plus automatic archiving.

# Assure24seven web-based monitoring

## Kryo-Admin - boxed solutions for condition monitoring

### **Kryo-Admin-Server**

Web Enabled Monitoring Software installed and validated on Planer supplied network server comprising the following hardware:

#### **IBM High-Speed Eserver XSeries 206 incorporating**

- Intel 2.6 GHz Processor
- Red Hat Linux AS, Version 2.1 or Windows 2003 Server Operating System
- RAM 512 MB / Video RAM 16 MBb
- Hard Drive 1 x 80 Gb
- CD reader 48X max / Floppy Drive
- LAN EN, Fast EN, Gigabit EN
- Monitor : 17 inch Flat Screen
- Single User Domino Express Server Licence
- Single User Notes Licence

The above hardware is supplied as a fully tested and validated system and incorporates the following software features:

#### **Standard Software Features:**

- Ethernet Connectivity,
- Data-Logging,
- Hi/Lo alarms for any incoming variable,
- email alarms,
- email to PDA,
- email graphical and text reports,
- charts and graphs
- output to Kryo-Watchdog
- remote browser data query.

#### **Optional Software Features:**

- Internet Connectivity,
- SMS Text Messaging to Mobile Phone,
- Alarm and Trend Prediction,
- Special Charts and Graphs,
- Wireless PDA Data Query,

### **Kryo-Admin-Install**

Web Enabled Monitoring Software installed and validated on customer supplied server, to agreed specification and pre-installed with Red Hat Linux or Windows 2003 Operating System, located in UK at customer premises.

### **Kryo-Admin**

Web Enabled Monitoring Software only (Through authorised distributors only)

#### **Options:**

- Kryo-Watchdog - Provides an alarm in the event of software, network or power failure.
- GSM Modem - provides independent operation of SMS text messaging to mobile telephones - no internet, email or TCP/IP is connection required.
- Wireless Access Point - IEEE 802.11g Network Access Point provides local WiFi Wireless connections for PDA or other Wireless devices.

**Planer plc, Windmill Road, Sunbury, Middlesex, TW16 7HD, United Kingdom.**

Tel: +44(0)1932 755000 Fax: +44(0)1932 755001 email: sales@planer.co.uk website: www.planer.co.uk

Planer reserves the right to change specifications without notice. All third party trademarks acknowledged. © 2006 Planer plc